

QWCA-15-1 WR-15 to 1.0mm

Features:
* Low VSWR

Applications:
* Wireless
* Transmitter
* Laboratory Test
* Radar

Electrical

Frequency:	50~75GHz
VSWR:	1.35 max.
Insertion Loss:	0.8dB max.
Impedance:	50Ω

Mechanical

Coax Connectors:	1.0mm
Waveguide Size:	WR-15
Flange:	UG-385/UM
Material:	Gold plated brass
Outer Conductor:	Passivated stainless steel
Dielectric:	CPS
Inner Conductor:	Gold plated beryllium copper

How To Order

QWCA-15-X-Y-Z

X : Connector type.

Y : Configuration type.

Z : Flange type if applicable.

Connector naming rules:

1F - 1.0mm Female (Outline A)

1 - 1.0mm Male (Outline B)

Configuration naming rules:

E - End launch (Outline A, Outline B)

R - Right angle

Flange naming rules:

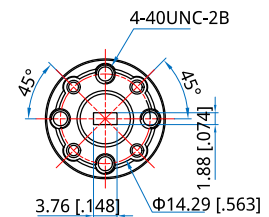
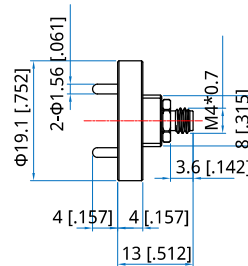
11 - UG-385/UM (Outline A, Outline B)

Examples:

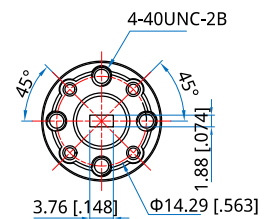
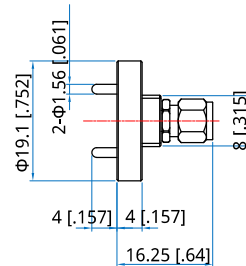
To order a waveguide to coax adapter, WR-15 to 1.0mm male, end launch, UG-385/UM, specify QWCA-15-1-E-11.

Customization is available upon request.

Outline Drawings



Outline A



Outline B

Unit: mm [in]

Tolerance: ±0.2mm [±0.008in]